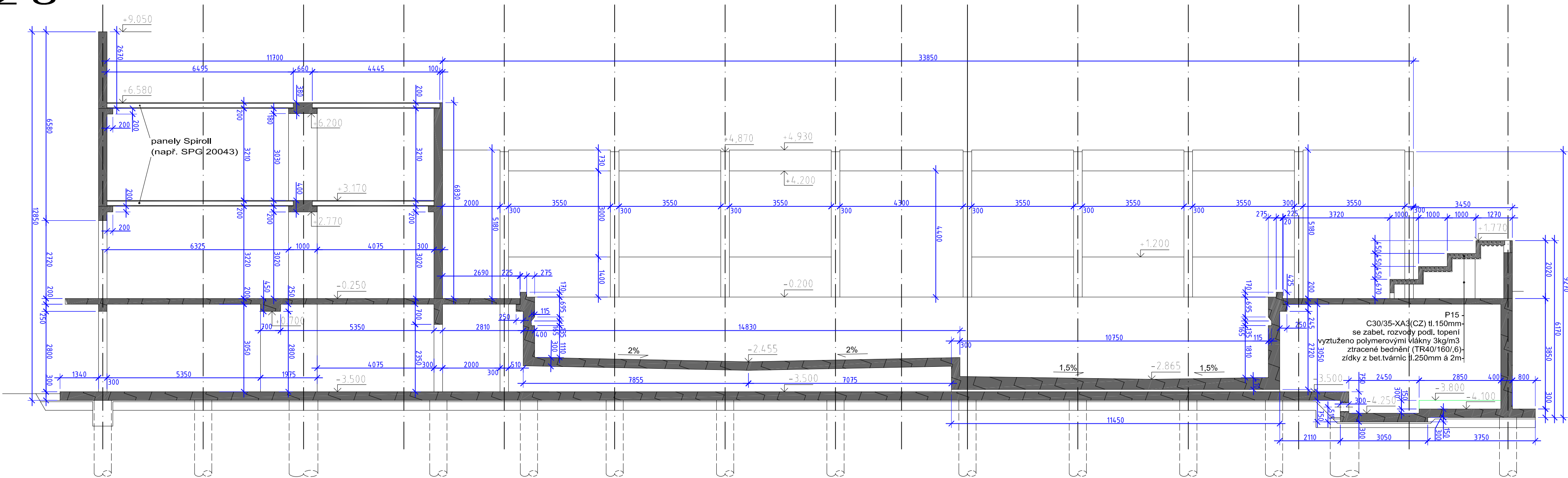
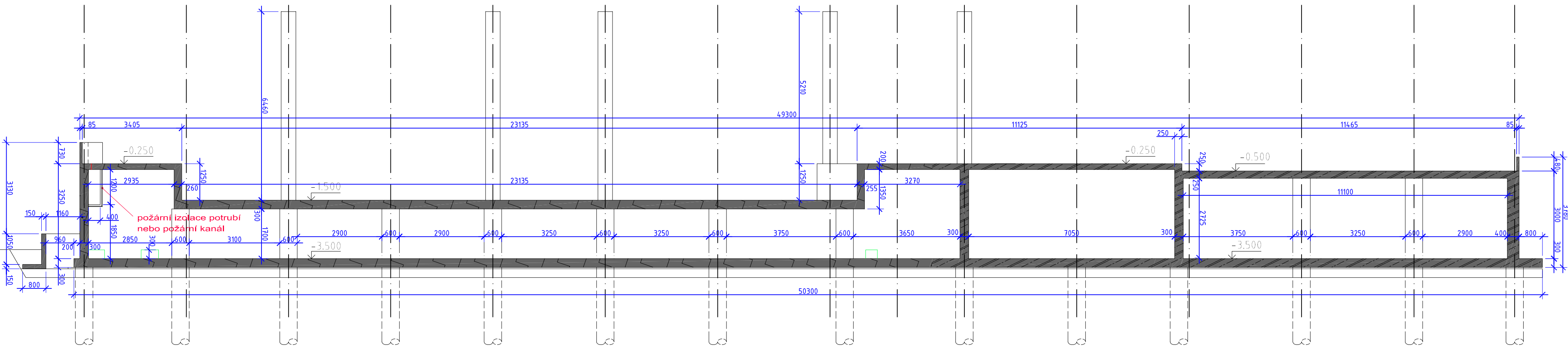


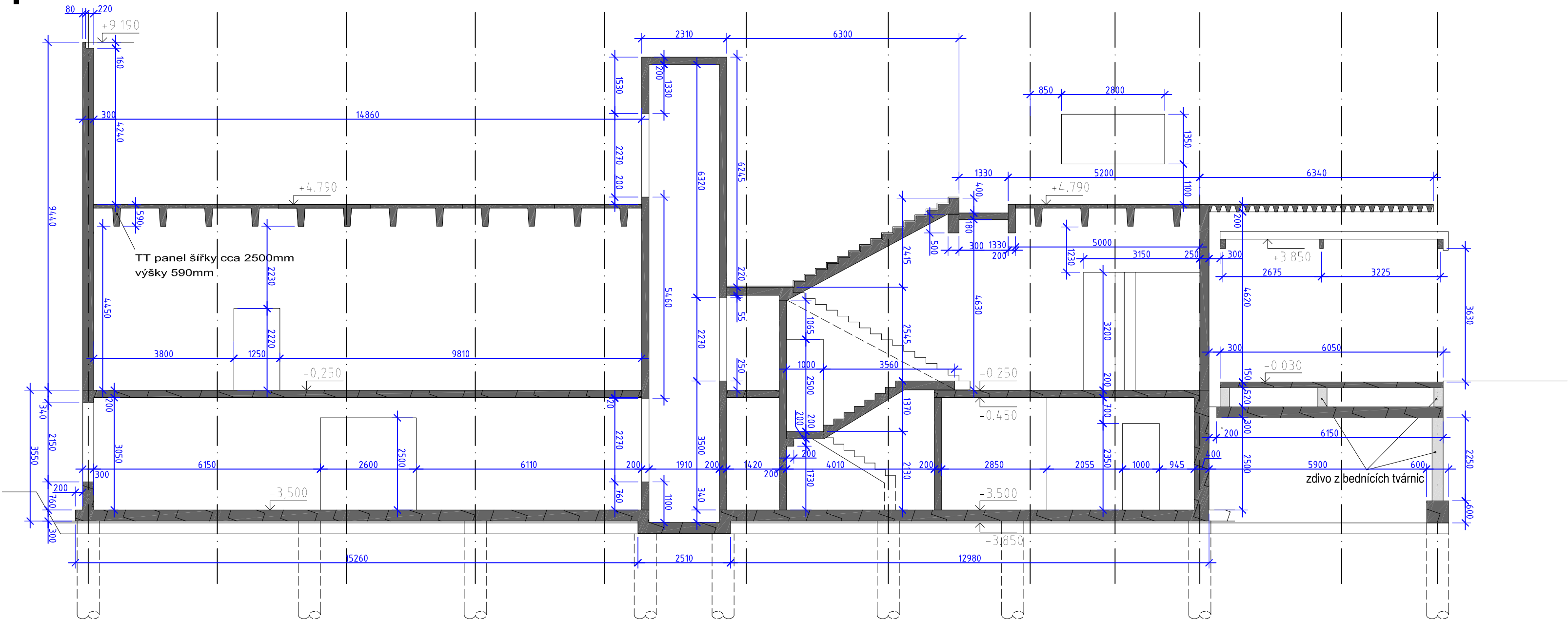
# řez 3





## řez 2



## řez 1



LEGENDA MATERIÁLŮ:

	železobetonové konstrukce – prefabrikované belton C35/45+XA3(CZ)-C10, 2-Dmax22-S3, ocel: B500B
	železobetonové konstrukce – monolitické belton C35/45+XA3(CZ)-C10, 2-Dmax22-S3, ocel: B500B
	

[illegible]